

SDN-BTA

Bluetooth and Zigbee Network Device

Date: _____

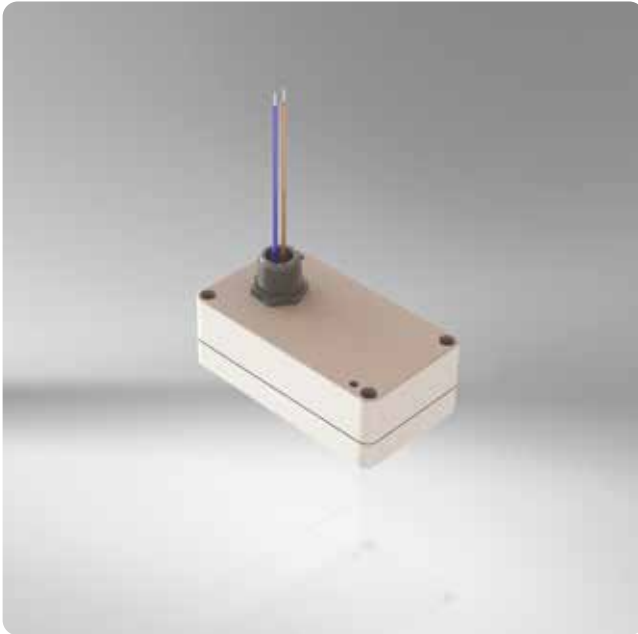
Quantity: _____

Company: _____

Project: _____

A smart device enabling Bluetooth Low-Energy (BLE) and Zigbee Wireless Mesh Networks

The SDN-BTA enables the SiteWorx Area Facility Insights application to find, track, and count equipment, products, and even people when used in combination with AREA-TAG Asset Tracking Tags.



Key Features & Benefits

- Provides both Bluetooth® Low-Energy (BLE) and SiteWorx® Wireless Mesh Network capability
- Enables SiteWorx® Area application find, track, and count capabilities when used in combination with AREA-TAG Asset Tracking Tags
- Line-voltage powered for easy placement for new and retrofit installations
- PG-7 (0.5 inch) trade-size knockout for easy connection to junction boxes and legacy luminaires
- Incorporates and extends the SiteWorx wireless mesh network

With Facility Wellness as Your Goal—Our SiteWorx Solution is The Path That Takes You There

Our suite of SiteWorx applications and array of smart devices can meter your utilities, monitor your entire facility, and observe critical areas.

SiteWorx starts delivering meaningful data and actionable insights right out of the box. Now you can make data-informed decisions, spot hidden problems, and take immediate action. All while keeping your people safe and productive and your operation efficient and sustainable.

Our smart devices can be used with your lighting infrastructure or separately—making it easy to add more devices (and capabilities) as you identify new opportunities for greater efficiency and savings.

Observe Occupancy and Activity in Real-Time

SiteWorx Area gives you the ability to take a closer look at critical areas of your facility—or your entire facility. Monitor high-traffic areas and be notified when there is employee congestion, a potential health issue. Optimize floor plans by understanding space utilization. Become more efficient in your operations by creating user-defined geofences, and understand real-time movement and dwell-time of people, equipment and goods.

SiteWorx



Specifications

SENSING AND CONTROL

Wireless Networking

- IEEE 802.15.4
- 2.4 GHz Band
- Integrated Bluetooth Low-Energy (BLE)

Connected IoT Platform

- SiteWorx Area

ELECTRICAL

Input Voltage

- 120 to 277 VAC, 50/60 Hz

Power Consumption

- 0.5 W

ENVIRONMENTAL

Operating Temperature

- -30° to 60°C (-22° to 140°F)

Operating Humidity

- 0% to 95%, non-condensing

PHYSICAL

Enclosure

- ABS Plastic

Dimensions (H x W x D)

- 88 x 54 x 28 mm (3.5 x 2.1 x 1.1 inches)

Weight

- 200 g (7.05 oz)

Mounting Method

- PG-7 (0.5 inch) trade-size conduit knockout

WARRANTY

- 5-Year Limited

CERTIFICATIONS & SAFETY

Approbations

- UL/cUL, UL-NOM, CE, FCC Part 15 Class B

Environmental Suitability

- IP65

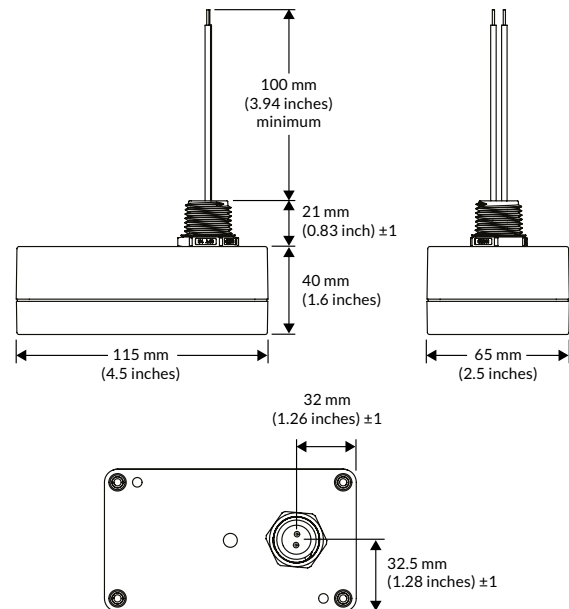


Ordering Information

Part Number

SDN-BTA-ST

Dimensions



Copyright © 2023 SiteWorx Software USA, LLC.

All rights reserved. SiteWorx, the SiteWorx logo, We Generate Facility Wellness, LightRules, and any other trademark, service mark, or tradename (collectively "the Marks") are either trademarks or registered trademarks of SiteWorx Software USA, LLC in the United States and/or other countries, or remain the property of their respective owners that have granted SiteWorx Software USA, LLC the right and license to use such Marks and/or are used herein as nominative fair use. Due to continuous improvements and innovations, specifications may change without notice.

DOC-004026-00 Rev E 12-23