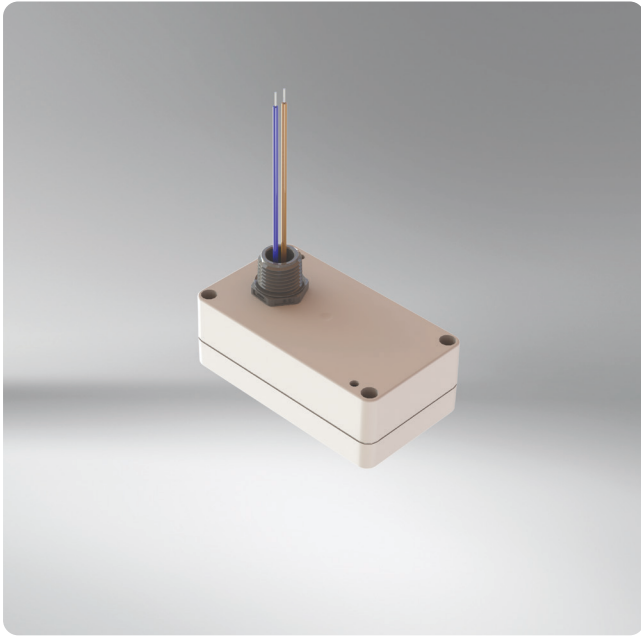


# SDN-BTA

## Bluetooth and Wireless Network Device



The SiteWorx **SDN-BTA** enables the SiteWorx Area Facility Insights application to find, track, and count equipment, products, and people when used in combination with AREA-TAG Asset Tracking Tags.

Date: \_\_\_\_\_

Quantity: \_\_\_\_\_

Company: \_\_\_\_\_

Project: \_\_\_\_\_

### SiteWorx Application

- SiteWorx Area



### Key Features & Benefits

- Provides both Bluetooth® Low-Energy (BLE) and SiteWorx® Wireless Mesh Network capability
- Enables SiteWorx® Area application find, track, and count capabilities when used in combination with AREA-TAG Asset Tracking Tags
- Line-voltage powered for easy placement for new and retrofit installations
- PG-7 (0.5 inch) trade-size knockout for easy connection to junction boxes and legacy luminaires
- Incorporates and extends the SiteWorx wireless mesh network

## Specifications

---

### SENSING AND CONTROL

#### Smart Device

- Enables SiteWorx® Area application find, track, and count capabilities when used in combination with AREA-TAG Asset Tracking Tags

#### Network Communication

- SiteWorx Wireless Mesh Network IEEE 802.15.4 enabling SiteWorx Sense Smart Devices cloud communication
- 2.4 GHz Band
- Integrated Bluetooth Low-Energy (BLE)

#### Technology Platform

- Incorporates and extends the SiteWorx wireless mesh network

### ELECTRICAL

#### Input Voltage

- 120 to 277 VAC, 50/60 Hz

#### Power Consumption

- 0.5 W

### ENVIRONMENTAL

#### Operating Temperature

- -30° to 60°C (-22° to 140°F)

#### Operating Humidity

- 0% to 95%, non-condensing

### PHYSICAL

#### Enclosure

- ABS Plastic

#### Dimensions (H x W x D)

- 88 x 54 x 28 mm (3.5 x 2.1 x 1.1 inches)

#### Weight

- 200 g (7.05 oz)

#### Mounting Options

- Junction Box Mount
- Luminaire Mount

#### Mounting Hole Diameter

- PG-7 (0.5 inch) trade-size knockout

### WARRANTY

- 5-Year Limited

### CERTIFICATIONS & SAFETY

#### Approbations

- ETL, CE, UKCA, FCC Part 15 Class B

#### Environmental Suitability

- IP65



## Ordering Information

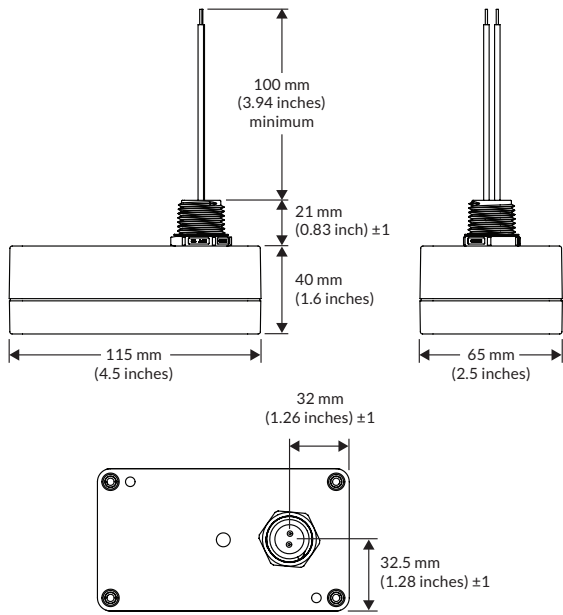
---

#### Part Number

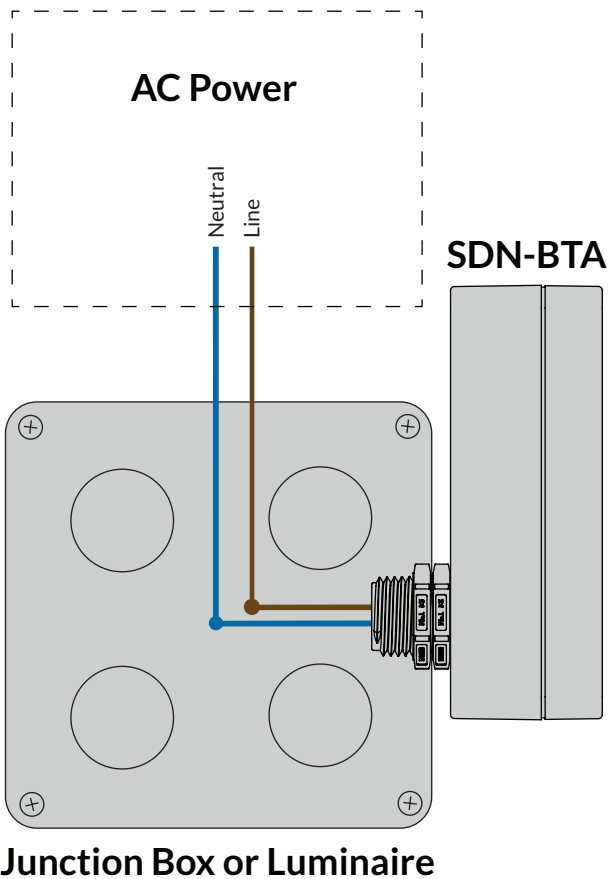
SDN-BTA-ST

---

## Dimensions

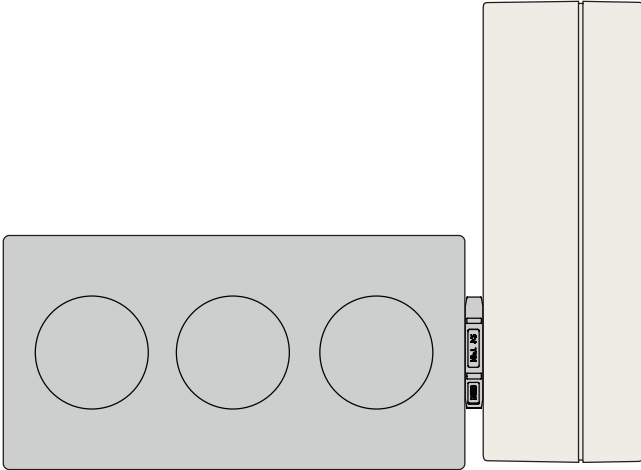


## Wiring Diagram



## Mounting Options

### Junction Box Mount



### Luminaire Mount

